

Antigen Self-Test User Guide

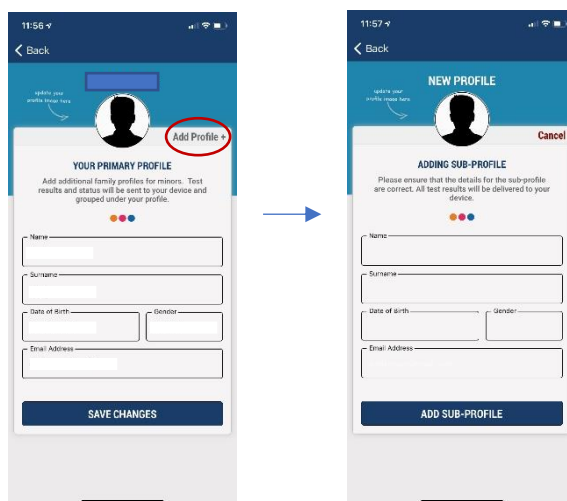
1. Download the NPH iMed App

Please see the troubleshooting document for more information on how to do this



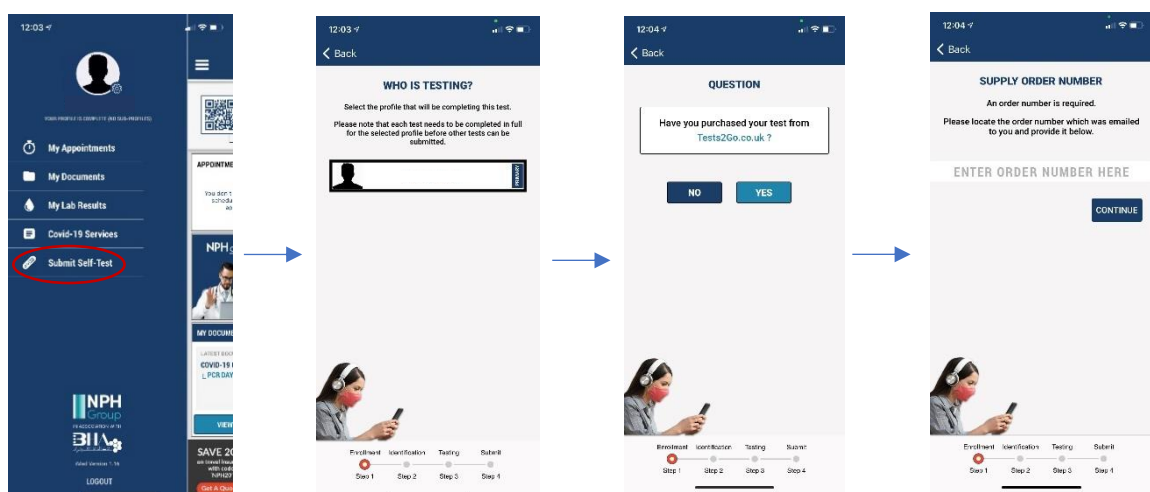
2. Complete registration process on NPH iMed app

This is where you can add family profiles should you need to



3. Click 'Submit self-test' on the side menu and follow the instructions on screen

Select the correct profile, click 'yes' to the question and enter your order number to start the test

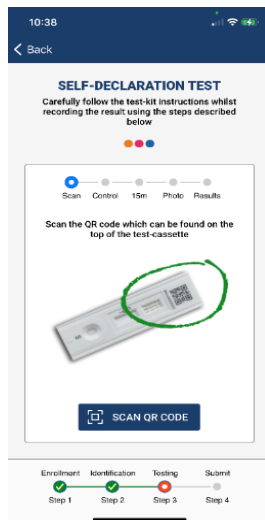


Antigen Self-Test User Guide



4. Scan the QR code located on the test cassette then follow the manufacturer instructions to complete your test

You will be asked to take 2 photographs with your app during the testing process



5. Submit your test result via the app and your result will be ready within minutes

The result will show in your app and will be emailed to you

